

CHAPTER III

District Analysis of Perspective Plan of MGNREGA in Lakshadweep (Missing Infrastructure at the District Level)

In this chapter, District wise details of the missing infrastructure (proposed works) and other details has been given. This part deals with the district perspective plan of MGNREGS in Lakshadweep.

III.0. Lakshadweep District

The district of Lakshadweep stretches from 80° to 12°30' North Latitude and from 71° to 74° East longitude. The distance of Union territory of Lakshadweep from the Malabar Coast in the south - west of India varies between 200-400 kms. An archipelago of 12 atolls, it is comprised of 26 beautiful islands out of which 10 are inhabited and 16 uninhabited islands, islets and immersed reefs. It has about 4 lakhs sq. kms. of economic zone, about 4,200 sq.kms of lagoon area, and 20,000 sq. kms of territorial waters. The emerald waters are dotted with silvery beaches and swaying coconut trees. Lakshadweep is spread over a total geographical area of 32 sq. kms, it is a uni-district territory. The economy of Lakshadweep consists of coconut cultivation, fishing, cattle rearing, coir twisting and tourism.

III.1. Population

According to the latest population estimates Lakshadweep district has a population of 68251(2009 population Projections¹). Out of these 34959 (51.22%) are males and 33292 (48.78%) are female. The sex ratio of the district according to this projection is 952 females per 1000 males. The population according to the 2001 census were 60650, out of this 31131 (51.33%) are males and 29519 (48.67%) are females. Out of the total population of 60650, 57321 people belong to schedules tribes (94.51%) According to latest figures there are 9994 household out of which 902 are in Below Poverty Line which comes to 9.02 percent. The decennial population growth of Lakshadweep district is 17.30 percent. The population has grown from 51707 in 1991 to 60650 in 2001. The average density of population is 2131. The literacy rate of Lakshadweep Island as a

¹ The population projection is taken from the Basic Statistics Document published by the directorate of Planning and Statistics, Lakshadweep.

whole comes to 86.66. Out of this, the female literacy rate is 80.47 percent and male literacy rate is 92.53 percent. Male female literacy rates marks a difference of around 12.06 percent. The table no. III.1 provide a summation of he block wise details of the above information.

Table No. III.1: Population and other details of Lakshadweep District 2001

Particulars	Block					
	Kavaratti	Andrott	Amini	Kiltan	Minicoy	Total
Population	17193 (28.34%)	15048 (24.81%)	12687 (20.92%)	6227 (10.27%)	9495 (15.66%)	60650 (100%)
Male	9275 (29.79%)	7635 (24.52%)	6428 (20.65%)	3176 (10.21%)	4617 (14.83%)	31131 (100%)
Female	7918 (26.82%)	7413 (25.11%)	6259 (21.20%)	3051 (10.35%)	4878 (16.52%)	29519 (100%)
Density	2687 (23.24%)	2055 (17.77%)	2274 (19.66%)	2375 (20.54%)	2173 (18.79%)	11620 (100%)
ST	15844 (27.64%)	14223 (24.81%)	12386 (21.61%)	6035 (10.53%)	8833 (15.41%)	57321 (100%)
Sex Ratio	854	971	974	961	1056	948
Literacy	87.68	84.36	84.96	83.44	93.05	86.66
Male Literacy	93.44	92.15	91.48	87.24	95.39	92.53
Female Literacy	80.96	76.02	78.31	79.23	90.86	80.47
House hold	2879 (28.81%)	2444 (24.45%)	2119 (21.20%)	1198 (11.99%)	1354 (13.55%)	9994 (100%)
BPL Families	148 (16.41%)	254 (28.16%)	280 (31.04%)	206 (22.84%)	14 (1.55%)	902 (100%)
Poverty Ration	5.14%	10.39%	13.21%	17.20%	1.03%	9.02%

Table: Population and other details of Lakshadweep District 2001

Source: Basic Statistics 2007, Directorate of planning and statistics Lakshadweep, DRDA Kavaratti

III.2. Work Participation

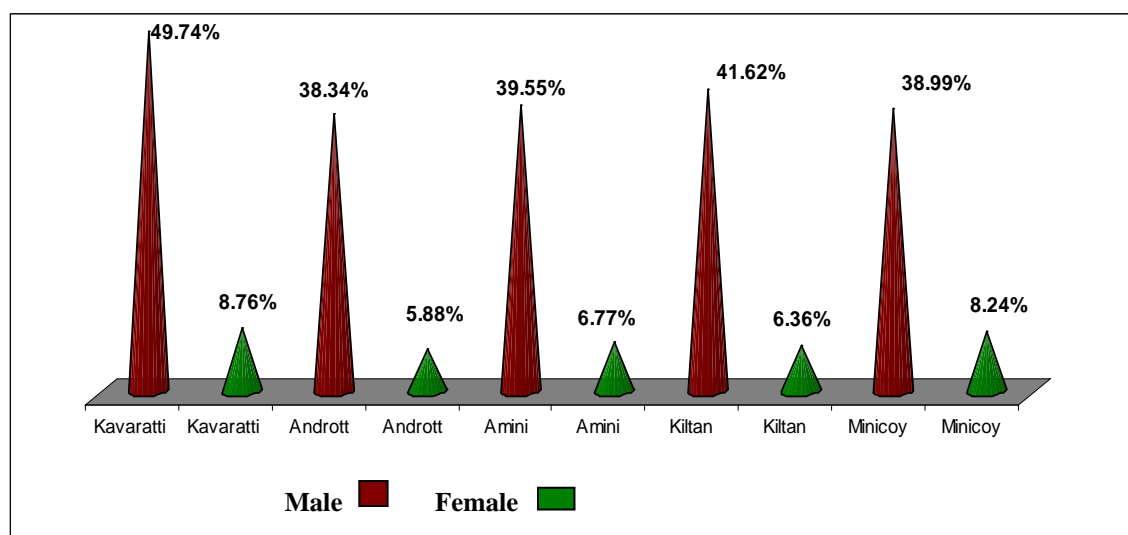
Work participation suggests variations across the blocks and between genders. An analysis of the work participation suggest that the female work participation is quite poor in almost all the islands and this is mainly because of the gender practices in the island and work culture in the island. Out of the total population of 60650 only 15354 people work which is 25.31 percent. Male female work participation also differs much, while male work participation is 42.41 percent the Female work participation is just 7.28 percent. The table No.III.2 & diagram no. III.i suggest the block wise work participation (both male and female).

Table No. III.2: Gender Work Participation Rate, Block Wise

SI No	Block	Total Population			Total Workers			Percentage		
		Male	Female	Total	Male	Female	Total	Male	Female	Total
1	Kavaratti	9275 (29.79%)	7918 (26.82%)	17193 (28.35%)	4613 (34.94%)	694 (32.28%)	5307 (34.56%)	49.74	8.76	30.87
2	Andrott	7635 (24.52%)	7413 (25.11%)	15048 (24.81%)	2927 (22.17%)	436 (20.28%)	3363 (21.90%)	38.34	5.88	22.35
3	Amini	6428 (20.65%)	6259 (21.20%)	12687 (20.92%)	2542 (19.25%)	424 (19.72%)	2966 (19.32%)	39.55	6.77	23.38
4	Kiltan	3176 (10.21%)	3051 (10.35%)	6227 (10.27%)	1322 (10.01%)	194 (9.02%)	1516 (9.88%)	41.62	6.36	24.35
5	Minicoy	4617 (14.83%)	4878 (16.52%)	9495 (15.65%)	1800 (13.63%)	402 (18.70%)	2202 (14.34%)	38.99	8.24	23.19
	Total	31131 (100%)	29519 (100%)	60650 (100%)	13204 (100%)	2150 (100%)	15354 (100%)	42.41	7.28	25.31

Source: Basic statistics 2007 published by Directorate of Planning & Statistics Kavaratti

Diagram No.III. i : Block wise Work Participation (Male & Female)



III.3. Women Empowerment

Women in Lakshadweep compared to their counterparts in the rest of the country are better educated and are aware of their rights and responsibilities. They are though not very much organized are active in social life. The self help movement also has taken a lead in the blocks. There are a total of 295 women self help groups functioning in all the islands. More over out of the total 86 elected members to the Panchayat 33 members are females. There are total 10 VDP

chairpersons out of which 4 are women (40%). Total there are 25 DP members out of which nine are women (36 %). The block wise breakup is given in table no. III.3 below;

Table No. III.3: SHG and Women Panchayat members

Block	SHG	%	Panchayat Members		Total	% of Females
			Male	Female		
Kavaratti	71	24.07	13(24.53%)	8 (24.24%)	21(24.42%)	38.10%
Andrott	99	33.55	12 (22.64%)	7 (21.21%)	19 (22.09%)	36.84%
Amini	63	21.36	11 (20.75%)	7 (21.21%)	18 (20.93%)	38.89%
Kiltan	32	10.85	11 (20.75%)	6 (18.18%)	17 (19.77%)	35.29%
Minicoy	30	10.17	6 (11.33%)	5 (15.16%)	11 (12.79%)	45.45%
Total	295	100%	53 (100%)	33 (100%)	86 (100%)	38.37%

Source: Consolidated during the field visit from respective VDP

III.4. Infrastructure Facilities & Amenities

The infrastructure and amenities in the district include ponds, wells, schools, health centers and other basic amenities. The table no III.4. provides the detail of the infrastructure and the amenities in the district. Most of the blocks have similar facilities with varying numbers. Most of the Blocks have primary health centers and sub centers. In Bitra island there is a first aid centre to manage the health issues.

Table No. III.4: Basic Amenities and Infrastructure – Lakshadweep

Amenities / Infrastructure	Unit	Kavaratti	Andrott	Amini	Kiltan	Minicoy	Total
Pond (2009)	Number	340 (31.86%)	340 (31.86%)	173 (16.21%)	160 (15%)	54 (5.07%)	1067 (100%)
Well (2009)	Number	2973 (26.61%)	3557 (31.84%)	2521 (22.56%)	1372 (12.28%)	750 (6.71%)	11173 (100%)
PWD Road (2009) - Km	Kilometer	36.36 (22.61%)	45.02 (27.99%)	41.80 (25.99%)	11.49 (7.15%)	26.15 (16.26%)	160.82 (100%)
Lower Primary School (2009)	Number	3 (23.08%)	3 (23.08%)	3 (23.08%)	3 (23.08%)	1 (7.68%)	13 (100%)
Upper Primary School (2009)	Number	3 (25%)	3 (25%)	3 (25%)	2 (16.67%)	1 (8.33%)	12 (100%)
High School	Number	1 (16.67%)	4 (66.67%)	1 (16.66%)	0 (0%)	0 (0%)	6 (100%)
Higher Secondary School (2009)	Number	3 (30%)	2 (20%)	2 (20%)	2 (20%)	1 (10%)	10 (100%)
Anganwadi (2009)	Number	24 (27.59%)	21 (24.14%)	18 (20.69%)	10 (11.49%)	14 (16.09%)	87 (100%)
Krishi Bhawan (2009)	Number	2 (22.22%)	2 (22.22%)	2 (22.22%)	2 (22.22%)	1 (11.12%)	9 (100%)
Veterinary Hospital (2009)	Number	2 (22.22%)	2 (22.22%)	2 (22.22%)	2 (22.22%)	1 (11.12%)	9 (100%)
Primary Health Centre (2009)	Number	2 (22.22%)	2 (22.22%)	2 (22.22%)	2 (22.22%)	1 (11.12%)	9 (100%)
Sub Centre (2009)	Number	1 (12.5%)	2 (25%)	3 (37.5%)	1 (12.5%)	1 (12.5%)	8 (100%)
First Aid Centre (2009)	Number	0(0%)	0(0%)	0(0%)	1 (100%)	0(0%)	1 (100%)
Library (2009)	Number	2 (20%)	2 (20%)	2 (20%)	3 (30%)	1 (10%)	10 (100%)
Rain Water Harvesting Tank (2009)	Number	355 (39.05%)	61 (6.72%)	103 (11.33%)	160 (17.60%)	230 (25.30%)	909 (100%)
Post Office (2002)	Number	2 (20%)	2 (20%)	2 (20%)	3 (30%)	1 (10%)	10 (100%)
Power Generation (2006-07)	Kwh	9326.55 (33.34%)	6010.32 (21.49%)	4973.8 (17.78%)	2140.1 (7.65%)	5521.68 (19.74%)	27972.43 (100%)
Power Consumption - Domestic (2006-07)	Kwh	4617.82 (27.06%)	4136.31 (24.24%)	2955.9 (17.32%)	1413.2 (8.29%)	3941.01 (23.09%)	17064.24 (100%)
Power Consumption – Commercial (2006-07)	Kwh	2424.88 (46.44%)	889.4 (17.03%)	713.79 (13.67%)	429.13 (8.23%)	764.01 (14.63%)	5221.21 (100%)
Power Consumption – Industrial (2006-07)	Kwh	104.43 (26.72%)	61.03 (15.61%)	70.97 (18.16%)	17.97 (4.60%)	136.46 (34.91%)	390.86 (100%)
Power Connections – Domestic (2006-07)	Number	4968 (29.91%)	4083 (24.59%)	3538 (21.30%)	2027 (12.20%)	1991 (12%)	16607 (100%)
Power Connections – Commercial (2006-07)	Number	1008 (30.17%)	869 (26.01%)	606 (18.14%)	438 (13.11%)	420 (12.57%)	3341 (100%)
Power Connections – Industrial (2006-07)	Number	70 (24.82%)	78 (27.66%)	68 (24.11%)	29 (10.29%)	37 (13.12%)	282 (100%)
Telephone Connections (2007)	Number	2622 (30.24%)	2178 (25.12%)	1617 (18.65%)	918 (10.59%)	1336 (15.40%)	8671 (100%)

Source: Basic Statistics, 2007, Directorate of Planning and Statistics Participatory Discussions during field visit with various stakeholders in the block.

III.5. Local Economy

Local economy of Lakshadweep district consists of agriculture, animal husbandry and fisheries. Coconut is the dominating agricultural crop in the district. A total of 580.18 Lakhs of coconuts have been harvested in the district in 2006-07. Apart from these 1848400 liters of milk and 12736000 eggs have been produced in the district in 2006-07 and this includes both private and public sector.

A total of 11751 tones of fish have been landed in 2006 in the district including fish landing from Suheli Island which alone works out as 1452 tons. The revenue from this comes to around Rs.2350 Lakhs. There is an increase in revenue over years. The peak year was 1998 when the yield was 14626 tons and the revenue was Rs.2486.42. In Lakshadweep there are a total of 2624 full time active fishermen and 5516 part-time or occasional fishermen as per 2006-07 statistics. The table no. III.5 suggests the block wise distribution of fish coconut and other production in the island.

Table No. III.5: Block wise Production of coconut , egg fish etc..

Block	Coconut (In Lakhs)	Milk (In Liters)	Egg (In Numbers)	Fish Landing (In Tons)
Kavaratti	154.26 (26.59%)	451845 (24.44%)	3229944 (25.36%)	3680 (35.73%)
Andrott	190.7 (32.86%)	496252 (26.84%)	3303407 (25.94%)	2089 (20.28%)
Amini	139.46 (24.04%)	386085 (20.89%)	2785405 (21.87%)	508 (4.94%)
Kiltan	58.3 (10.05%)	280896 (15.20%)	1831971 (14.38%)	1572 (15.26%)
Minicoy	37.46 (6.46%)	233322 (12.63%)	1585273 (12.45%)	2450 (23.79%)
Total	580.18 (100%)	1848400 (100%)	12736000 (100%)	10299 (100%)

Source: Basic Statistics, 2007, Directorate of Planning and Statistics

III.6. MGNREGA Governance and Registration Trend

A total of 8540 families have been registered for MGNREGS work and out of this 3367 job cards have been issues (39.43%). 46151 Mandays have been created in the island and out of this women worked in 18159 days (39.35%). The table no. III.6 suggests the block wise break up of this.

Table No. III.6: MGNREGA Block Wise Registrations and Mandays Generated

Name of the Blocks	No of HH Registered	No. of Job Card Issues	% of Job card Issued out of Registered	No. of Mandays Generated			% of Female Participation out of total participation
				Male	Female	Total	
Kavaratti	2478 (29.01%)	719 (21.35%)	29%	2449 (8.75%)	3199 (17.62%)	5648 (12.24%)	57%
Andrott	2198 (25.74%)	1725 (51.23%)	78%	14507 (51.83%)	11022 (60.70%)	25529 (55.31%)	43%
Amini	2165 (25.35%)	341 (10.13%)	16%	771 (2.75%)	489 (2.69%)	1260 (2.73%)	39%
Kiltan	1104 (12.93%)	443 (13.16%)	40%	9534 (34.06%)	1708 (9.40%)	11242 (24.36%)	15%
Minicoy	595 (6.97%)	139 (4.13%)	23%	731 (2.61%)	1741 (9.59%)	2472 (5.36%)	70%
Total	8540 (100%)	3367 (100%)	39%	27992 (100%)	18159 (100%)	46151 (100%)	39%

Source: Discussion with VDPs and the MGNREGA progress report, DRDA, Kavaratti

III.7. Labor Supply Trend

The labour availability in Lakshadweep for various works has been limited by a number of factors in different island. Some of the factors include;

- Seasonality of Fishing
- Cultural Preferences
- Labour Practices
- Gender Practices and Culture of Work

All these affect the labour availability. More over the climatic changes and the various festivals in the island also are the factors that affect the availability of labour force.

Labour Projection

A labour projection has been worked out to estimate the future labour availability in the island for MGNREGS and it is shown in the table no. III.7. In 2010-2011, the number of workers has been projected as 19172 and for 2014-2015 it is 21671 (it is the number of persons, not the mandays).

Table No. III.7: Block wise Distribution of Labour Projection

Name of the Block	Labour Projection (in nos)					
	2010-11	2011-12	2012-13	2013-14	2014-15	Growth Rate
Kavaratti	4507 (23.51%)	4676 (23.64%)	4852 (23.77%)	5036 (23.90%)	5228 (24.12%)	3.50%
Andrott	5917 (30.86%)	6080 (30.74%)	6248 (30.61%)	6422 (30.47%)	6502 (30%)	3.50%
Amini	5711 (29.79%)	5825 (29.45%)	5941 (29.11%)	6060 (28.75%)	6182 (28.53%)	2%
Kiltan	1847 (9.63%)	1888 (9.55%)	1929 (9.45%)	1973 (9.36%)	2017 (9.31%)	4.67%
Minicoy	1190 (6.21%)	1309 (6.62%)	1440 (7.06%)	1584 (7.52%)	1742 (8.04%)	10%
Total	19172 (100%)	19778 (100%)	20410 (100%)	21075 (100%)	21671 (100%)	4.73%

Source: Calculated from the population growth trend and the labour supply trend Basic Statistics, 2007, Directorate of Planning and Statistics, Lakshadweep &. Information collected from DRDA, Kavaratti

III.8. Work Proposal

The work proposal of the district has been calculated from the various block wise tables. Further this has been calculated from the adjusted (final proposals). The tables suggest the consolidation of works at the district level (Table No III.8.a, III.8.b & III.8.c). This has been done on the basis of various factors. Some of them are gender practices of work, ecological pressure on the islands, land shortage and problems related with land acquisition, population density, the development potentials of the activity and the size of the labour force.

Table No.III.8.a: Missing Infrastructure / Proposed Works: FINALISED (Type of works, no of work and Proposed under which Program) - Convergence																		
Name of District : Lakshadweep																		
Sl.No	Missing Infrastructure/ Works proposed	Year															Total	
		210-2011			2011-2012			2012-2013			2013-2014			2014-2015				
		No of works activity taken up	Cost (Rs.In Lakhs)	Proposed under which Prog (Convergence)	No of works activity taken up	Cost (Rs.In Lakhs)	Proposed under which Prog (Convergence)	No of works activity taken up	Cost (Rs.In Lakhs)	Proposed under which Prog (Convergence)	No of works activity taken up	Cost (Rs.In Lakhs)	Proposed under which Prog (Convergence)	No of works activity taken up	Cost (Rs.In Lakhs)	Proposed under which Prog (Convergence)	No of works activity taken up	Cost (Rs.In Lakhs)
I. Water Conservation																		
I.1	Digging of Pond	15	22.5	PRWSS	21	31.5	PRWSS	19	28.5	PRWSS	17	25.5	PRWSS	14	21	PRWSS	86	129
I.2	Percolation of Well	61	19.215	PRWSS	73	22.995	PRWSS	74	23.315	PRWSS	80	25.2	PRWSS	83	26.15	PRWSS	371	116.875
I.3	Rain Water Harvesting Tank	272	81.6	PWD/ST	314	94.2	PWD/ST	384	115.2	PWD/ST	386	115.8	PWD/ST	476	142.8	PWD/ST	1832	549.6
I.4	Well Recharge Pit	130	1.955	PRWSS	130	1.955	PRWSS	84	1.26	PRWSS	110	1.65	PRWSS	102	1.53	PRWSS	556	8.35
I.5	Chakirikulam	30	0.75	ADF	30	0.75	ADF	35	0.875	ADF	30	0.75	ADF	25	0.625	ADF	150	3.75
I.6	Husk Burial	2048	204.8	ADF	2273	227.3	ADF	2069	206.9	ADF	2608	260.8	ADF	2847	284.7	ADF	11845	1184.5
II. Renovation of Traditional Water Bodies																		
II.1	Well Renovation	373	56	PRWSS	413	61.95	PRWSS	471	70.65	PRWSS	481	72.15	PRWSS	542	81.3	PRWSS	2280	342.05
II.2	Pond Renovation	79	39.5	DSP	88	44	DSP	89	44.5	DSP	79	39.5	DSP	102	51	DSP	437	218.5
III.Rural Connectivity																		
III.1	Link Road(km)	16.26	650.4	PWD	13.7	548	PWD	10.53	421.2	PWD	12.5	500	PWD	10.8	432	PWD	63.79	2551.6
III.2	Ring Road(km)	7	280	PWD	8.5	340	PWD	6	240	PWD	5	200	PWD	5.65	226	PWD	32.15	1286
III.3	Road Maintanance(km)	0.3	12	PWD	0.3	12	PWD	0	0	PWD	0	0	PWD	0	0	PWD	0.6	24
IV. Flood Control																		
IV.1	Anti Sea Erosion Work	5.7	91.2	LDMF/PWD	6.5	104	LDMF/PWD	5.7	91.2	LDMF/PWD	5.3	84.8	LDMF/PWD	5.5	88	LDMF/PWD	28.7	459.2

Table No. III.8.a. contd.....

Sl.No	Missing Infrastructure/ Works proposed	Year																	
		210-2011			2011-2012			2012-2013			2013-2014			2014-2015			Total		
		No of works activity taken up	Cost (Rs.In Lakhs)	Proposed under which Prog (Convergence)	No of works activity taken up	Cost (Rs.In Lakhs)	Proposed under which Prog (Convergence)	No of works activity taken up	Cost (Rs.In Lakhs)	Proposed under which Prog (Convergence)	No of works activity taken up	Cost (Rs.In Lakhs)	Proposed under which Prog (Convergence)	No of works activity taken up	Cost (Rs.In Lakhs)	Proposed under which Prog (Convergence)	No of works activity taken up	Cost (Rs.In Lakhs)	
IV.2	Maintanance of Anti Sea Erosion Work(km)	1	8	LDMF/PWD	0.5	4	LDMF/PWD	1	8	LDMF/PWD	1	8	LDMF/PWD	2	16	LDMF/PWD	5.5	44	
IV.3	Sea Shore Plantation(ha)	18.33	45.35	EFD	25.98	64.54	EFD	22.8	56.35	EFD	26.19	64.73	EFD	34.32	84.77	EFD	127.6	315.74	
IV.4	Sea Mouth Cleaning(m)	0	0	NA	0	0	NA	105	10.5	LDMF/PWD	105	10.5	LDMF/PWD	40	4	LDMF/PWD	250	25	
V. Land Development																			
V.1	Coconut Seedling	5495	27.475	ADF	6580	32.9	ADF	5030	25.15	ADF	5190	25.95	ADF	4695	23.475	ADF	26990	134.95	
V.2	Coconut Pathy	59	10.03	ADF	58	9.86	ADF	51	8.67	ADF	46	7.82	ADF	51	8.67	ADF	265	45.05	
V.3	Centri Pital Teracing	9100	4.55	ADF	16200	8.1	ADF	12200	6.1	ADF	14300	7.15	ADF	18200	9.1	ADF	70000	35	
V.4	Coconut Compost Pit	88	1.32	ADF	200	3	ADF	125	1.875	ADF	145	2.175	ADF	163	2.445	ADF	721	10.815	
V.5	Coconut Trench	150	2.25	ADF	170	2.55	ADF	150	2.25	ADF	175	2.63	ADF	155	2.325	ADF	800	12.005	
V.6	Compost Pit	170	2.55	ADF	135	2.025	ADF	140	2.1	ADF	155	2.305	ADF	175	2.625	ADF	775	11.605	
V.7	Waste Pit	494	7.41	ADF	650	9.75	ADF	610	9.825	ADF	640	9.6	ADF	739	11.085	ADF	3133	47.67	
V.8	Coir Pith Compost	32	0.48	ADF	65	0.975	ADF	75	1.125	ADF	55	0.825	ADF	93	1.395	ADF	320	4.8	
V.9	Fish Waste Compost	23	0.345	ADF	68	1.02	ADF	34	0.51	ADF	10	0.15	ADF	62	0.93	ADF	197	2.955	
V.10	Horticulture(ha)	27.78	27.44	RKVY	33.73	33.32	RKVY	33.72	33.32	RKVY	51.09	50.47	RKVY	192.55	53.9	RKVY	338.87	198.45	
V.11	Bio Fencing(m)	4500	9	RKVY	6000	12	RKVY	6300	12.6	RKVY	8700	21.4	RKVY	11500	29	RKVY	37000	84	
V.12	Land Development & Island Cleaning(ha)	267	12.816	DSP	263	12.624	DSP	282	13.536	DSP	298	14.304	DSP	332	15.936	DSP	1442	69.216	
V.13	Road Side Plantation(ha)	0.99	2.45	EFD	2.97	7.35	EFD	2.58	6.37	EFD	2.97	7.35	EFD	3.97	9.8	EFD	13.48	33.32	
V.14	Clearing Bushes(ha)	13.2	6.6	DSP	20.1	10.05	DSP	20	10.05	DSP	15	7.5	DSP	0	0	DSP	68.3	34.2	
V.15	Soil Up Filling(ha)	0.06	0.72	DSP	0.15	1.8	DSP	1	1.2	DSP	0.13	1.56	DSP	0.25	3	DSP	1.59	8.28	

Table No. III.8.a. contd.....

Sl. No	Missing Infrastructure/ Works proposed	Year																	
		210-2011			2011-2012			2012-2013			2013-2014			2014-2015			Total		
		No of works activity taken up	Cost (Rs.In Lakhs)	Proposed under which Prog (Convergence)	No of works activity taken up	Cost (Rs.In Lakhs)	Proposed under which Prog (Convergence)	No of works activity taken up	Cost (Rs.In Lakhs)	Proposed under which Prog (Convergence)	No of works activity taken up	Cost (Rs.In Lakhs)	Proposed under which Prog (Convergence)	No of works activity taken up	Cost (Rs.In Lakhs)	Proposed under which Prog (Convergence)	No of works activity taken up	Cost (Rs.In Lakhs)	
V.16	Soil Removing JB School Minicoy (ha)	0.01	0.5	DSP	0	0	NA	0	0	NA	0	0	NA	0	0	DSP	0.01	0.5	
V.17	Ground Leveling SS School Minicoy(ha)	0.2	5	DSP	0	0	NA	0	0	NA	0	0	NA	0	0	DSP	0.2	5	
V.18	Ground Grass Filling HSS Kalpeni (ha)	0.25	20	DSP	0	0	NA	0	0	NA	0	0	NA	0	0	DSP	0.25	20	
V.19	Tree Plantation -School(ha)	0.0925	4.533	EFD	0.103	5.025	EFD	0.011	0.515	EFD	0	0	NA	0	0	EFD	0.2065	10.073	
V.20	Vegetable Garden-School(ha)	0.017	2.04	ADF	0	0	NA	0.017	2.04	ADF	0	0	NA	0.017	2.04	ADF	0.051	6.12	
V.21	Roof Vegetable Garden-School(ha)	0.16	19.2	ADF	0.08	9.6	ADF	0	0	NA	0.08	9.6	ADF	0.16	19.2	ADF	0.48	57.6	
VI. Other Works																			
VI.1	Septic Tank	188	16.92	TSC	236	21.24	TSC	197	17.73	TSC	203	18.27	TSC	278	25.02	TSC	1102	99.18	
VI.2	Public Toilet & Urinal	1	2	TSC	0	0	TSC	2	4	TSC	1	2	TSC	0	0	TSC	4	8	
VI.3	Coconut Climbing	0	0	ADF/CB	0	0	ADF/CB	0	195	ADF/CB	0	195	ADF/CB	0	195	ADF/CB	0	585	
VI.4	Mosquito Control(days)	150	0.1875	DSP	200	0.25	DSP	150	0.1875	DSP	50	0.0625	DSP	50	0.0625	DSP	600	0.75	
VI.5	Param Maintenance	13	0.325	ADF	15	0.375	ADF	12	0.3	ADF	15	0.375	ADF	14	0.35	ADF	69	1.725	
VI.6	Compound Wall GH to PWD(KM)	0.5	7.5	PWD	1	15	PWD	0	0	NA	0	0	NA	0	0	NA	1.5	22.5	
VI.7	Cycle Shed -School	3	3	SSA	0	0	NA	0	0	NA	0	0	NA	0	0	NA	3	3	
VI.8	Kitchen Shed & Kitchen Block Repair- School	2	2	SSA	0	0	NA	1	1.5	SSA	0	0	NA	0	0	NA	3	3.5	

Table No. III.8.a. contd.....

Sl.No	Missing Infrastructure/ Works proposed	Year																
		210-2011			2011-2012			2012-2013			2013-2014			2014-2015			Total	
		No of works activity taken up	Cost (Rs.In Lakhs)	Proposed under which Prog (Convergence)	No of works activity taken up	Cost (Rs.In Lakhs)	Proposed under which Prog (Convergence)	No of works activity taken up	Cost (Rs.In Lakhs)	Proposed under which Prog (Convergence)	No of works activity taken up	Cost (Rs.In Lakhs)	Proposed under which Prog (Convergence)	No of works activity taken up	Cost (Rs.In Lakhs)	Proposed under which Prog (Convergence)	No of works activity taken up	Cost (Rs.In Lakhs)
VI.9	Auditorium SS School Minicoy	1	5	SSA	1	8	SSA	1	7	SSA	0	0	NA	0	0	NA	1	20
VI.10	New Hall GSS Kavaratti	1	20	SSA	0	0	NA	0	0	NA	0	0	NA	0	0	NA	1	20
VI.11	New Building JB East Kavaratti	0	0	NA	1	30	SSA	0	0	SSA	0	0	SSA	0	0	NA	1	30
VI.12	Building Repair SS School Kavaratti	0	0	NA	0	0	NA	1	15	SSA	0	0	NA	0	0	NA	1	15
VI.13	Compound Wall-School Kavaratti & Minicoy(KM)	0.12	1.8	SSA	0.5	7.5	SSA	0	0	NA	0	0	NA	0	0	NA	0.62	9.3
VI.14	Lab SSSchool Minicoy	0	0	NA	1	12	SSA	0	0	NA	0	0	NA	0	0	NA	1	12

Source : Consolidation of block wise final works

Table No. III.8.b: Missing infrastructure / Proposed Works Lakshadweep District: FINALISED (Expected number of Self Employment, Expected Mandays Generated and Mandays converted in to number of persons)																
Name of District : Lakshadweep																
Sl.No	Missing Infrastructure/ Works proposed	Year														
		2010-2011					2011-2012					2012-2013				
		No of works activity taken up	Expected No of Self employment	Expected mandays generation	Weightage	Mandays converted in to no.of persons	No of works activity taken up	Expected No of Self employment	Expected mandays generation	Weightage	Mandays converted in to no.of persons	No of works activity taken up	Expected No of Self employment	Expected mandays generation	Weightage	Mandays converted in to No of persons
I. Water Conservation																
I.1	Digging of Pond	15	0	10800	1%	240	21	0	15120	2%	333	19	0	13680	2%	307
I.2	Percolation of Well	61	0	9223	1%	205	73	0	11036	1%	243	74	0	11188	1%	251
I.3	Rain Water Harvesting Tank	272	0	42528	5%	944	314	0	45516	5%	1004	384	0	55296	6%	1243
I.4	Well Recharge Pit	130	0	1560	0%	35	130	0	1560	0%	34	84	0	1008	0%	23
I.5	Chakirikulam	30	0	600	0%	13	30	0	600	0%	13	35	0	700	0%	16
I.6	Husk Burial	2048	0	98304	11%	2181	2273	0	109104	12%	2406	2069	0	99312	11%	2232
II. Renovation of Traditional Water Bodies																
II.1	Well Renovation	373	0	26856	3%	596	413	0	29736	3%	656	471	0	33912	4%	762
II.2	Pond Renovation	79	0	18960	2%	421	88	0	21120	2%	466	89	0	21360	2%	480
III.Rural Connectivity																
III.1	Link Road(km)	16.26	0	312195	36%	6927	13.7	0	263040	29%	5800	10.53	0	202176	22%	4544

Table No. III.8.b contd.....

Sl.No	Missing Infrastructure/ Works proposed	Year														
		2010-2011					2011-2012					2012-2013				
		No of works activity taken up	Expected No of Self employment	Expected mandays generation	Weightage	Mandays converted in to no.of persons	No of works activity taken up	Expected No of Self employment	Expected mandays generation	Weightage	Mandays converted in to no.of persons	No of works activity taken up	Expected No of Self employment	Expected mandays generation	Weightage	Mandays converted in to No of persons
III.2	Ring Road(km)	7	0	134400	16%	2982	8.5	0	163200	18%	3599	6	0	115200	13%	2589
III.3	Road Maintenance (km)	0.3	0	5760	1%	128	0.3	0	5760	1%	127	0	0	0	0%	0
IV. Flood Control																
IV.1	Anti Sea Erosion Work	5.7	0	43776	5%	971	6.5	0	49920	6%	1101	5.7	0	43776	5%	984
IV.2	Maintenance of Anti Sea Erosion Work(km)	1	0	3840	0%	85	0.5	0	1920	0%	42	1	0	3840	0%	86
IV.3	Sea Shore Plantation(ha)	18.33	0	21756	3%	483	25.98	0	30811	3%	679	22.8	0	27048	3%	608
IV.4	Sea Mouth Cleaning(m)	0	0	0	0%	0	0	0	0	0%	0	105	0	8400	1%	189
V. Land Development																
V.1	Coconut Seedling	5495	0	13188	2%	293	6580	0	15792	2%	348	5030	0	12072	1%	271
V.2	Coconut Pathy	59	0	4814	1%	107	58	0	4732	1%	104	51	0	4163	0%	94
V.3	Centri Pital Teracing	9100	0	3640	0%	81	16200	0	6480	1%	143	12200	0	4880	1%	110
V.4	Coconut Compost Pit	88	0	1056	0%	23	200	0	2400	0%	53	125	0	1500	0%	34

Table No. III.8.b contd.....

Sl.No	Missing Infrastructure/ Works proposed	Year														
		2010-2011					2011-2012					2012-2013				
		No of works activity taken up	Expected No of Self employment	Expected mandays generation	Weightage	Mandays converted in to no.of persons	No of works activity taken up	Expected No of Self employment	Expected mandays generation	Weightage	Mandays converted in to no.of persons	No of works activity taken up	Expected No of Self employment	Expected mandays generation	Weightage	Mandays converted in to No of persons
V.5	Coconut Trench	150	0	1800	0%	40	170	0	2040	0%	45	150	0	1800	0%	40
V.6	Compost Pit	170	0	2040	0%	45	135	0	1620	0%	36	140	0	1680	0%	38
V.7	Waste Pit	494	0	5928	1%	132	650	0	7800	1%	172	610	0	7860	1%	177
V.8	Coir Pith Compost	32	0	384	0%	9	65	0	780	0%	17	75	0	900	0%	20
V.9	Fish Waste Compost	23	0	276	0%	6	68	0	816	0%	18	34	0	408	0%	9
V.10	Horticulture(ha)	27.78	0	21952	3%	487	33.73	0	25087	3%	553	33.72	0	26656	3%	599
V.11	Bio Fencing(m)	4500	0	4320	0%	96	6000	0	5760	1%	127	6300	0	6048	1%	136
V.12	Land Development & Island Cleaning(ha)	267	0	10253	1%	228	263	0	10099	1%	223	282	0	10829	1%	243
V.13	Road Side Plantation(ha)	0.99	0	1176	0%	26	2.97	0	3528	0%	78	2.58	0	3058	0%	69
V.14	Clearing Bushes(ha)	13.2	0	6080	1%	135	20.1	0	8040	1%	177	20	0	8040	1%	181
V.15	Soil Up Filling(ha)	0.06	0	576	0%	13	0.15	0	1440	0%	32	1	0	960	0%	22
V.16	Soil Removing JB School Minicoy(ha)	0.01	0	400	0%	9	0	0	0	0%	0	0	0	0	0%	0

Table No. III.8.b contd.....

Sl.No	Missing Infrastructure/ Works proposed	Year														
		2010-2011					2011-2012					2012-2013				
		No of works activity taken up	Expected No of Self employment	Expected mandays generation	Weightage	Mandays converted in to no.of persons	No of works activity taken up	Expected No of Self employment	Expected mandays generation	Weightage	Mandays converted in to no.of persons	No of works activity taken up	Expected No of Self employment	Expected mandays generation	Weightage	Mandays converted in to No of persons
V.17	Ground Leveling SS School Minicoy(ha)	0.2	0	4000	0%	89	0	0	0	0%	0	0	0	0	0%	0
V.18	Ground Grass Filling HSS Kalpeni(ha)	0.25	0	9600	1%	213	0	0	0	0%	0	0	0	0	0%	0
V.19	Tree Plantation -School(ha)	0.0925	0	2176	0%	48	0.103	0	2412	0%	53	0.011	0	248	0%	6
V.20	Vegetable Garden-School(ha)	0.017	0	1632	0%	36	0	0	0	0%	0	0.017	0	1632	0%	37
V.21	Roof Vegetable Garden-School(ha)	0.16	0	9216	1%	204	0.08	0	4608	1%	102	0	0	0	0%	0

VI. Other Works

VI.1	Septic Tank	188	0	8121	1%	180	236	0	10195	1%	225	197	0	8942	1%	201
VI.2	Public Toilet & Urinal	1	0	960	0%	21	0	0	0	0%	0	2	0	1920	0%	43
VI.3	Coconut Climbing	0	0	0	0%	0	0	0	0	0%	0	0	0	156000	17%	3507
VI.4	Mosquito Control(days)	150	0	150	0%	3	200	0	200	0%	4	150	0	150	0%	3

Table No. III.8.b contd.....

Sl.No	Missing Infrastructure/ Works proposed	Year														
		2010-2011					2011-2012					2012-2013				
		No of works activity taken up	Expected No of Self employment	Expected mandays generation	Weightage	Mandays converted in to no.of persons	No of works activity taken up	Expected No of Self employment	Expected mandays generation	Weightage	Mandays converted in to no.of persons	No of works activity taken up	Expected No of Self employment	Expected mandays generation	Weightage	Mandays converted in to No of persons
VI.5	Param Maintanance	13	0	260	0%	6	15	0	300	0%	7	12	0	240	0%	5
VI.6	Compound Wall GH to PWD(KM)	0.5	0	3600	0%	80	1	0	7200	1%	159	0	0	0	0%	0
VI.7	Cycle Shed -School	3	0	1440	0%	32	0	0	0	0%	0	0	0	0	0%	0
VI.8	Kitchen Shed & Kitchen Block Repair-School	2	0	960	0%	21	0	0	0	0%	0	1	0	720	0%	16
VI.9	Auditorium SS School Minicoy	1	0	3000	0%	67	1	0	3400	0%	75	1	0	3200	0%	72
VI.10	New Hall GSS Kavaratti	1	0	9600	1%	213	0	0	0	0%	0	0	0	0	0%	0
VI.11	New Building JB East Kavaratti	0	0	0	0%	0	1	0	14400	2%	318	0	0	0	0%	0
VI.12	Building Repair SS School Kavaratti	0	0	0	0%	0	0	0	0	0%	0	1	0	7200	1%	162

Table No. III.8.b contd.....

Sl.No	Missing Infrastructure/ Works proposed	Year														
		2010-2011					2011-2012					2012-2013				
		No of works activity taken up	Expected No of Self employment	Expected mandays generation	Weightage	Mandays converted in to no.of persons	No of works activity taken up	Expected No of Self employment	Expected mandays generation	Weightage	Mandays converted in to no.of persons	No of works activity taken up	Expected No of Self employment	Expected mandays generation	Weightage	Mandays converted in to No of persons
VI.13	Compound Wall - School, Kavaratti & Minicoy(KM)	0.12	0	864	0%	19	0.5	0	3600	0%	79	0	0	0	0%	0
VI.14	Lab SS School Minicoy	0	0	0	0%	0	1	0	5760	1%	127	0	0	0	0%	0
	Total		0	864020	100%	19172		0	896932	100%	19778		0	908002	100%	20410

Source : Consolidation of block wise final works

Table No. III.8.b: Missing infrastructure / Proposed Works Lakshadweep District: FINALISED (Expected number of Self Employment, Expected Mandays Generated and Mandays converted in to number of persons)

Name of District : Lakshadweep

Sl.No	Missing Infrastructure/ Works proposed	Year														
		2013-2014				Mandays converted in to No of persons	2014-2015				Total					
		No of works activity taken up	Expected No of Self employment	Expected mandays generation	Weightage		No of works activity taken up	Expected No of Self employment	Expected mandays generation	Weightage	Mandays converted in to No of persons	No of works activity taken up	Expected No of Self employment	Expected mandays generation	Weightage	Mandays converted in to No of persons
I. Water Conservation																
I.1	Digging of Pond	17	0	12240	1%	268	14	0	10080	1%	219	86	0	61920	1%	1365.
I.2	Percolation of Well	80	0	12095	1%	265	83	0	12549	1%	272	371	0	56091	1%	1237
I.3	Rain Water Harvesting Tank	386	0	55584	6%	1218	476	0	68544	7%	1488	1832	0	267468	5%	5899
I.4	Well Recharge Pit	110	0	1320	0%	29	102	0	1224	0%	27	556	0	6672	0%	147
I.5	Chakirikulam	30	0	600	0%	13	25	0	500	0%	11	150	0	3000	0%	66
I.6	Husk Burial	2608	0	125184	13%	2742	2847	0	136656	14%	2966	11845	0	568560	12%	12540
II. Renovation of Traditional Water Bodies																
II.1	Well Renovation	481	0	34632	4%	759	542	0	39024	4%	847	2280	0	164160	3%	3620
II.2	Pond Renovation	79	0	18960	2%	415	102	0	24480	2%	531	437	0	104880	2%	2313
III.Rural Connectivity																
III.1	Link Road(km)	12.5	0	240000	25%	5257	10.8	0	207360	21%	4501	63.79	0	1224771	26%	27013

Table No. III.8.b contd.....

Sl.No	Missing Infrastructure/ Works proposed	Year														
		2013-2014					2014-2015					Total				
		No of works activity taken up	Expected No of Self employment	Expected mandays generation	Weightage	Mandays converted in to No of persons	No of works activity taken up	Expected No of Self employment	Expected mandays generation	Weightage	Mandays converted in to No of persons	No of works activity taken up	Expected No of Self employment	Expected mandays generation	Weightage	Mandays converted in to No of persons
III.2	Ring Road(km)	5	0	96000	10%	2103	5.65	0	108480	11%	2355	32.15	0	617280	13%	13614
III.3	Road Maintenance(km)	0	0	0	0%	0	0	0	0	0%	0	0.6	0	11520	0%	254
IV. Flood Control																
IV.1	Anti Sea Erosion Work	5.3	0	40704	4%	892	5.5	0	42240	4%	917	28.7	0	220416	4%	4861
IV.2	Maintenance of Anti Sea Erosion Work(km)	1	0	3840	0%	84	2	0	7680	1%	167	5.5	0	21120	0%	465
IV.3	Sea Shore Plantation(ha)	26.19	0	31046	3%	680	34.32	0	40690	4%	883	127.6	0	151351	3%	3338
IV.4	Sea Mouth Cleaning(m)	105	0	8400	1%	184	40	0	3200	0%	69	250	0	20000	0%	441
V. Land Development																
V.1	Coconut Seedling	5190	0	12456	1%	273	4695	0	11268	1%	245	26990	0	64776	1%	1428
V.2	Coconut Pathy	46	0	5180	1%	113	51	0	4162	0%	90	265	0	23051	0%	508
V.3	Centri Pital Teracing	14300	0	5720	1%	125	18200	0	7280	1%	158	70000	0	28000	0%	617
V.4	Coconut Compost Pit	145	0	1740	0%	38	163	0	1956	0%	42	721	0	8652	0%	190

Table No. III.8.b contd.....

Sl.No	Missing Infrastructure/ Works proposed	Year														
		2013-2014					2014-2015					Total				
		No of works activity taken up	Expected No of Self employment	Expected mandays generation	Weightage	Mandays converted in to No of persons	No of works activity taken up	Expected No of Self employment	Expected mandays generation	Weightage	Mandays converted in to No of persons	No of works activity taken up	Expected No of Self employment	Expected mandays generation	Weightage	Mandays converted in to No of persons
V.5	Coconut Trench	175	0	2100	0%	46	155	0	1860	0%	40	800	0	9600	0%	211
V.6	Compost Pit	155	0	1860	0%	41	175	0	2100	0%	46	775	0	9300	0%	205
V.7	Waste Pit	640	0	7680	1%	168	739	0	8868	1%	192	3133	0	38136	0.0%	841
V.8	Coir Pith Compost	55	0	660	0%	14	93	0	1116	0%	24	320	0	3840	0.0%	84.
V.9	Fish Waste Compost	10	0	120	0%	3	62	0	744	0%	16	197	0	2364	0%	52
V.10	Horticulture(ha)	51.09	0	40376	4%	884	192.55	0	43120	4%	936	3.87	0	157191	3%	3467
V.11	Bio Fencing(m)	8700	0	10272	1%	225	11500	0	13920	1%	302	37000	0	40320	0%	889
V.12	Land Development & Island Cleaning(ha)	298	0	11443	1%	251	332	0	12941	1%	281	1442	0	55565	1%	1225
V.13	Road Side Plantation(ha)	2.97	0	3528	0%	77	3.97	0	4704	0%	102	13.48	0	15994	0.0%	352
V.14	Clearing Bushes(ha)	15	0	6000	1%	131	0	0	0	0%	0	68.3	0	28160	0%	621
V.15	Soil Up Filling(ha)	0.13	0	1248	0%	27	0.25	0	2400	0%	52	1.59	0	6624	0.0%	146
V.16	Soil Removing JB School Minicoy(ha)	0	0	0	0%	0	0	0	0	0%	0	0.01	0	400	0%	8

Table No. III.8.b contd.....

Sl.No	Missing Infrastructure/ Works proposed	Year														
		2013-2014					2014-2015					Total				
		No of works activity taken up	Expected No of Self employment	Expected mandays generation	Weightage	Mandays converted in to No of persons	No of works activity taken up	Expected No of Self employment	Expected mandays generation	Weightage	Mandays converted in to No of persons	No of works activity taken up	Expected No of Self employment	Expected mandays generation	Weightage	Mandays converted in to No of persons
V.17	Ground Leveling SS School Minicoy(ha)	0	0	0	0%	0	0	0	0%	0	0.2	0	4000	0%	88	
V.18	Ground Grass Filling HSS Kalpeni(ha)	0	0	0	0%	0	0	0	0%	0	0.25	0	9600	0%	211	
V.19	Tree Plantation - School(ha)	0	0	0	0%	0	0	0	0%	0	0.207	0	4836	0%	106	
V.20	Vegetable Garden-School(ha)	0	0	0	0%	0	0.017	0	1632	0%	35	0.051	0	4896	0%	107
V.21	Roof Vegetable Garden-School(ha)	0.08	0	4608	0%	101	0.16	0	9216	1%	200	0.48	0	27648	0%	609
VI. Other Works																
VI.1	Septic Tank	203	0	9202	1%	202	278	0	12009	1%	261	1102	0	48469	1%	1069
VI.2	Public Toilet & Urinal	1	0	960	0%	21	0	0	0	0%	0	4	0	3840	0%	84.
VI.3	Coconut Climbing	0	0	156000	16%	3417	0	0	156000	16%	3386	0	0	468000	1%	10322
VI.4	Mosquito Control(days)	50	0	50	0%	1	50	0	50	0%	1	600	0	600	0%	13

Table No. III.8.b contd.....

Sl.No	Missing Infrastructure/ Works proposed	Year														
		2013-2014					2014-2015					Total				
		No of works activity taken up	Expected No of Self employment	Expected mandays generation	Weightage	Mandays converted in to No of persons	No of works activity taken up	Expected No of Self employment	Expected mandays generation	Weightage	Mandays converted in to No of persons	No of works activity taken up	Expected No of Self employment	Expected mandays generation	Weightage	Mandays converted in to No of persons
VI.5	Param Maintenance	15	0	300	0%	7	14	0	280	0%	6	69	0	1380	0%	30
VI.6	Compound Wall GH to PWD(KM)	0	0	0	0%	0	0	0	0	0%	0	1.5	0	10800	0.0%	238
VI.7	Cycle Shed -School	0	0	0	0%	0	0	0	0	0%	0	3	0	1440	0.0%	31
VI.8	Kitchen Shed & Kithen Block Repair- School	0	0	0	0%	0	0	0	0	0%	0	3	0	1680	0%	37
VI.9	Auditorium SS School Minicoy	0	0	0	0%	0	0	0	0	0%	0	1	0	9600	0.0%	211
VI.10	New Hall GSS Kavaratti	0	0	0	0%	0	0	0	0	0%	0	1	0	9600	0.0%	211
VI.11	New Building JB East Kavaratti	0	0	0	0%	0	0	0	0	0%	0	1	0	14400	0%	317
VI.12	Building Repair SS School Kavaratti	0	0	0	0%	0	0	0	0	0%	0	1	0	7200	0.0%	158.

Table No. III.8.b contd.....

Sl.No	Missing Infrastructure/ Works proposed	Year														
		2013-2014					2014-2015					Total				
		No of works activity taken up	Expected No of Self employment	Expected mandays generation	Weightage	Mandays converted in to No of persons	No of works activity taken up	Expected No of Self employment	Expected mandays generation	Weightage	Mandays converted in to No of persons	No of works activity taken up	Expected No of Self employment	Expected mandays generation	Weightage	Mandays converted in to No of persons
VI.13	Compound Wall - School, Kavaratti & Minicoy(KM)	0	0	0	0%	0	0	0	0	0%	0	0.62	0	4464	0.0%	98
VI.14	Lab SS School Minicoy	0	0	0	0%	0	0	0	0	0%	0	1	0	5760	0.0%	127
	Total		0	962108	100%	21075		0	998333	100%	21671		0	4629395		102106

Source : Consolidation of block wise final works

Table No. III.8.c: Missing infrastructure / Proposed Works Lakshadweep: FINALISED (Expected number of Self Employment, Expected Mandays Generated and Mandays converted in to number of persons)																			
Sl.No	Missing Infrastructure/ works proposed	Year																	
		2010-2011						2011-2012						2012-2013					
		Cost (Rs. In lakhs)	Expected No of Self employment	Expected mandays generation	Weightage	Mandays converted in to no.of persons days	Total Employment	Cost (Rs. In lakhs)	Expected No of Self employment	Expected mandays generation	Weightage	Mandays converted in to no.of persons days	Total Employment	Cost (Rs. In lakhs)	Expected No of Self employment	Expected mandays generation	Weightage	Mandays converted in to no.of persons days	Total Employment
I. Water Conservation																			
1.1	Digging of Pond	22.5	0	10800	1%	240	10800	31.5	0	15120	2%	333	15120	28.5	0	13680	2%	307	13680
1.2	Percolation of Well	19.215	0	9223	1%	205	9223	22.995	0	11036	1%	243	11036	23.315	0	11188	1%	251	11188
1.3	Rain Water Harvesting Tank	81.6	0	42528	5%	944	42528	94.2	0	45516	5%	1004	45516	115.2	0	55296	6%	1243	55296
1.4	Well Recharge Pit	1.955	0	1560	0%	35	1560	1.955	0	1560	0%	34	1560	1.26	0	1008	0%	23	1008
1.5	Chakirikulam	0.75	0	600	0%	13	600	0.75	0	600	0%	13	600	0.875	0	700	0%	16	700
1.6	Husk Burial	204.8	0	98304	11%	2181	98304	227.3	0	109104	12%	2406	109104	206.9	0	99312	11%	2232	99312
II. Renovation of Traditional Water Bodies																			
II.1	Well Renovation	56	0	26856	3%	596	26856	61.95	0	29736	3%	656	29736	70.65	0	33912	4%	762	33912
II.2	Pond Renovation	39.5	0	18960	2%	421	18960	44	0	21120	2%	466	21120	44.5	0	21360	2%	480	21360
III.Rural Connectivity																			
III.1	Link Road(km)	650.4	0	312195	36%	6927	312195	548	0	263040	29%	5800	263040	421.2	0	202176	22%	4544	202176
III.2	Ring Road(km)	280	0	134400	16%	2982	134400	340	0	163200	18%	3599	163200	240	0	115200	13%	2589	115200
III.3	Road Maintenance(km)	12	0	5760	1%	128	5760	12	0	5760	1%	127	5760	0	0	0	0%	0	0
IV. Flood Control																			
IV.1	Anti Sea Erosion Work	91.2	0	43776	5%	971	43776	104	0	49920	6%	1101	49920	91.2	0	43776	5%	984	43776

Table No. III.8.c contd.....

Sl.No	Missing Infrastructure/ works proposed	Year																	
		2010-2011						2011-2012						2012-2013					
		Cost (Rs. In lakhs)	Expected No of Self employment	Expected mandays generation	Weightage	Mandays converted in to no.of persons days	Total Employment	Cost (Rs. In lakhs)	Expected No of Self employment	Expected mandays generation	Weightage	Mandays converted in to no.of persons days	Total Employment	Cost (Rs. In lakhs)	Expected No of Self employment	Expected mandays generation	Weightage	Mandays converted in to no.of persons days	Total Employment
IV.2	Maintenance of Anti Sea Erosion Work(km)	8	0	3840	0%	85	3840	4	0	1920	0%	42	1920	8	0	3840	0%	86	3840
IV.3	Sea Shore Plantation(ha)	45.35	0	21756	3%	483	21756	64.19	0	30811	3%	679	30811	56.35	0	27048	3%	608	27048
IV.4	Sea Mouth Cleaning(m)	0	0	0	0%	0	0	0	0	0	0%	0	0	10.5	0	8400	1%	189	8400
V. Land Development																			
V.1	Coconut Seedling	27.475	0	13188	2%	293	13188	32.9	0	15792	2%	348	15792	25.15	0	12072	1%	271	12072
V.2	Coconut Pathy	10.03	0	4814	1%	107	4814	9.86	0	4732	1%	104	4732	8.67	0	4163	0%	94	4163
V.3	Centri Pital Terracing	4.55	0	3640	0%	81	3640	8.1	0	6480	1%	143	6480	6.1	0	4880	1%	110	4880
V.4	Coconut Compost Pit	1.32	0	1056	0%	23	1056	3	0	2400	0%	53	2400	1.875	0	1500	0%	34	1500
V.5	Coconut Trench	2.25	0	1800	0%	40	1800	2.55	0	2040	0%	45	2040	2.25	0	1800	0%	40	1800
V.6	Compost Pit	2.55	0	2040	0%	45	2040	2.025	0	1620	0%	36	1620	2.1	0	1680	0%	38	1680
V.7	Waste Pit	7.41	0	5928	1%	132	5928	9.75	0	7800	1%	172	7800	9.825	0	7860	1%	177	7860
V.8	Coir Pith Compost	0.48	0	384	0%	9	384	0.975	0	780	0%	17	780	1.125	0	900	0%	20	900
V.9	Fish Waste Compost	0.345	0	276	0%	6	276	1.02	0	816	0%	18	816	0.51	0	408	0%	9	408
V.10	Horticulture(ha)	27.44	0	21952	3%	487	21952	33.32	0	25087	3%	553	25087	33.32	0	26656	3%	599	26656
V.11	Bio Fencing(m)	9	0	4320	0%	96	4320	12	0	5760	1%	127	5760	12.6	0	6048	1%	136	6048
V.12	Land Development & Island Cleaning(ha)	12.816	0	10253	1%	228	10253	12.624	0	10099	1%	223	10099	13.536	0	10829	1%	243	10829

Table No. III.8.c contd.....

Sl.No	Missing Infrastructure/ works proposed	Year																	
		2010-2011						2011-2012						2012-2013					
		Cost (Rs. In lakhs)	Expected No of Self employment	Expected mandays generation	Weightage	Mandays converted in to no.of persons	Total Employment	Cost (Rs. In lakhs)	Expected No of Self employment	Expected mandays generation	Weightage	Mandays converted in to no.of persons	Total Employment	Cost (Rs. In lakhs)	Expected No of Self employment	Expected mandays generation	Weightage	Mandays converted in to no.of persons	Total Employment
V.13	Road Side Plantation(ha)	2.45	0	1176	0%	26	1176	7.35	0	3528	0%	78	3528	6.37	0	3058	0%	69	3058
V.14	Clearing Bushes(ha)	6.6	0	6080	1%	135	6080	10.05	0	8040	1%	177	8040	10.05	0	8040	1%	181	8040
V.15	Soil Up Filling(ha)	0.72	0	576	0%	13	576	1.8	0	1440	0%	32	1440	1.2	0	960	0%	22	960
V.16	Soil Removing JB School Minicoy(ha)	0.5	0	400	0%	9	400	0	0	0	0%	0	0	0	0	0	0%	0	0
V.17	Ground Leveling SS School Minicoy(ha)	5	0	4000	0%	89	4000	0	0	0	0%	0	0	0	0	0	0%	0	0
V.18	Ground Grass Filling HSS Kalpeni(ha)	20	0	9600	1%	213	9600	0	0	0	0%	0	0	0	0	0	0%	0	0
V.19	Tree Plantation - School(ha)	4.533	0	2176	0%	48	2176	5.025	0	2412	0%	53	2412	0.515	0	248	0%	6	248
V.20	Vegetable Garden-School(ha)	2.04	0	1632	0%	36	1632	0	0	0	0%	0	0	2.04	0	1632	0%	37	1632
V.21	Roof Vegetable Garden-School(ha)	19.2	0	9216	1%	204	9216	9.6	0	4608	1%	102	4608	0	0	0	0%	0	0
VI. Other Works																			
VI.1	Septic Tank	16.92	0	8121	1%	180	8121	21.24	0	10195	1%	225	10195	17.73	0	8942	1%	201	8942
VI.2	Public Toilet & Urinal	2	0	960	0%	21	960	0	0	0	0%	0	0	4	0	1920	0%	43	1920
VI.3	Coconut Climbing	0	0	0	0%	0	0	0	0	0	0%	0	0	195	0	156000	17%	3507	156000

Table No. III.8.c contd.....

Sl.No	Missing Infrastructure/ works proposed	Year																	
		2010-2011						2011-2012						2012-2013					
		Cost (Rs. In lakhs)	Expected No of Self employment	Expected mandays generation	Weightage	Mandays converted in to no.of persons	Total Employment	Cost (Rs. In lakhs)	Expected No of Self employment	Expected mandays generation	Weightage	Mandays converted in to no.of persons	Total Employment	Cost (Rs. In lakhs)	Expected No of Self employment	Expected mandays generation	Weightage	Mandays converted in to no.of persons	Total Employment
VI.4	Mosquito Control(days)	0.1875	0	150	0%	3	150	0.25	0	200	0%	4	200	0.1875	0	150	0%	3	150
VI.5	Param Maintenance	0.325	0	260	0%	6	260	0.375	0	300	0%	7	300	0.3	0	240	0%	5	240
VI.6	Compound Wall GH to PWD(KM)	7.5	0	3600	0%	80	3600	15	0	7200	1%	159	7200	0	0	0	0%	0	0
VI.7	Cycle Shed -School	3	0	1440	0%	32	1440	0	0	0	0%	0	0	0	0	0	0%	0	0
VI.8	Kithen Shed & Kithen Block Repair- School	2	0	960	0%	21	960	0	0	0	0%	0	0	1.5	0	720	0%	16	720
VI.9	Auditorium SSSchool Minicoy	5	0	3000	0%	67	3000	8	0	3400	0%	75	3400	7	0	3200	0%	72	3200
VI.10	New Hall GSS Kavaratti	20	0	9600	1%	213	9600	0	0	0	0%	0	0	0	0	0	0%	0	0
VI.11	New Building JB East Kavaratti	0	0	0	0%	0	0	30	0	14400	2%	318	14400	0	0	0	0%	0	0
VI.12	Building Repair SS School Kavaratti	0	0	0	0%	0	0	0	0	0	0%	0	0	15	0	7200	1%	162	7200
VI.13	Compound Wall - School ,Kavaratti &Minicoy(KM)	1.8	0	864	0%	19	864	7.5	0	3600	0%	79	3600	0	0	0	0%	0	0
VI.14	Lab SSSchool Minicoy	0	0	0	0%	0	0	12	0	5760	1%	127	5760	0	0	0	0%	0	0
	Total	1738.71		864020	100%	19172	864020	1813.5		896932	100%	19778	896932	1696.4		908002	100%	20410	908002

Table No. III.8.c contd.....

Table No. III.8.c: Missing infrastructure / Proposed Works Lakshadweep: FINALISED (Expected number of Self Employment, Expected Mandays Generated and Mandays converted in to number of persons)																			
Sl.No	Missing Infrastructure/ works proposed	Year																	
		2013-2014						2014-2015						Total					
		Cost (Rs. In lakhs)	Expected No of Self employment	Expected mandays generation	Weightage	Mandays converted in to no.of persons	Total Employment	Cost (Rs. In lakhs)	Expected No of Self employment	Expected mandays generation	Weightage	Mandays converted in to no.of persons	Total Employment	Cost (Rs. In lakhs)	Expected No of Self employment	Expected mandays generation	Weightage	Mandays converted in to No of persons	Total Employment
I. Water Conservation																			
1.1	Digging of Pond	25.5	0	12240	1%	268	12240	21	0	10080	1%	219	10080	129	0	61920	1%	1021	61920
1.2	Percolation of Well	25.2	0	12095	1%	265	12095	26.15	0	12549	1%	272	12549	116.875	0	56091	1%	1021	56091
1.3	Rain Water Harvesting Tank	115.8	0	55584	6%	1218	55584	142.8	0	68544	7%	1488	68544	549.6	0	267468	6%	6126	267468
1.4	Well Recharge Pit	1.65	0	1320	0%	29	1320	1.53	0	1224	0%	27	1224	8.35	0	6672	0%	0	6672
1.5	Chakirikulam	0.75	0	600	0%	13	600	0.625	0	500	0%	11	500	3.75	0	3000	0%	0	3000
1.6	Husk Burial	260.8	0	125184	13%	2742	125184	284.7	0	136656	14%	2966	136656	1184.5	0	568560	12%	12253	568560
II. Renovation of Traditional Water Bodies																			
II.1	Well Renovation	72.15	0	34632	4%	759	34632	81.3	0	39024	4%	847	39024	342.05	0	164160	4%	4084	164160
II.2	Pond Renovation	39.5	0	18960	2%	415	18960	51	0	24480	2%	531	24480	218.5	0	104880	2%	2042	104880
III.Rural Connectivity																			
III.1	Link Road(km)	500	0	240000	25%	5257	240000	432	0	207360	21%	4501	207360	2551.6	0	1224771	26%	26548	1224771
III.2	Ring Road(km)	200	0	96000	10%	2103	96000	226	0	108480	11%	2355	108480	1286	0	617280	13%	13274	617280
III.3	Road Maintenance(km)	0	0	0	0%	0	0	0	0	0	0%	0	0	24	0	11520	0%	0	11520
IV. Flood Control																			
IV.1	Anti Sea Erosion Work	84.8	0	40704	4%	892	40704	88	0	42240	4%	917	42240	459.2	0	220416	5%	5105	220416
IV.2	Maintenance of Anti Sea Erosion Work(km)	8	0	3840	0%	84	3840	16	0	7680	1%	167	7680	44	0	21120	0%	0	21120

Table No. III.8.c contd.....

Sl.No	Missing Infrastructure/ works proposed	Year																	
		2013-2014						2014-2015						Total					
		Cost (Rs. In lakhs)	Expected No of Self employment	Expected mandays generation	Weightage	Mandays converted in to no.of persons	Total Employment	Cost (Rs. In lakhs)	Expected No of Self employment	Expected mandays generation	Weightage	Mandays converted in to no.of persons	Total Employment	Cost (Rs. In lakhs)	Expected No of Self employment	Expected mandays generation	Weightage	Mandays converted in to No of persons	Total Employment
IV.3	Sea Shore Plantation(ha)	64.73	0	31046	3%	680	31046	84.77	0	40690	4%	883	40690	315.39	0	151351	3%	3063	151351
IV.4	Sea Mouth Cleaning(m)	10.5	0	8400	1%	184	8400	4	0	3200	0%	69	3200	25	0	20000	0%	0	20000
V. Land Development																			
V.1	Coconut Seedling	25.95	0	12456	1%	273	12456	23.475	0	11268	1%	245	11268	134.95	0	64776	1%	1021	64776
V.2	Coconut Pathy	7.82	0	5180	1%	113	5180	8.67	0	4162	0%	90	4162	45.05	0	23051	0%	0	23051
V.3	Centri Pital Terracing	7.15	0	5720	1%	125	5720	9.1	0	7280	1%	158	7280	35	0	28000	1%	1021	28000
V.4	Coconut Compost Pit	2.175	0	1740	0%	38	1740	2.445	0	1956	0%	42	1956	10.815	0	8652	0%	0	8652
V.5	Coconut Trench	2.63	0	2100	0%	46	2100	2.325	0	1860	0%	40	1860	12.005	0	9600	0%	0	9600
V.6	Compost Pit	2.305	0	1860	0%	41	1860	2.625	0	2100	0%	46	2100	11.605	0	9300	0%	0	9300
V.7	Waste Pit	9.6	0	7680	1%	168	7680	11.085	0	8868	1%	192	8868	47.67	0	38136	1%	1021	38136
V.8	Coir Pith Compost	0.825	0	660	0%	14	660	1.395	0	1116	0%	24	1116	4.8	0	3840	0%	0	3840
V.9	Fish Waste Compost	0.15	0	120	0%	3	120	0.93	0	744	0%	16	744	2.955	0	2364	0%	0	2364
V.10	Horticulture(ha)	50.47	0	40376	4%	884	40376	53.9	0	43120	4%	936	43120	198.45	0	157191	3%	3063	157191
V.11	Bio Fencing(m)	21.4	0	10272	1%	225	10272	29	0	13920	1%	302	13920	84	0	40320	1%	1021	40320
V.12	Land Development & Island Cleaning(ha)	14.3	0	11443	1%	251	11443	15.936	0	12941	1%	281	12941	69.216	0	55565	1%	1021	55565
V.13	Road Side Plantation(ha)	7.35	0	3528	0%	77	3528	9.8	0	4704	0%	102	4704	33.32	0	15994	0%	0	15994

Table No. III.8.c contd.....

Sl.No	Missing Infrastructure/ works proposed	Year																	
		2013-2014						2014-2015						Total					
		Cost (Rs. In lakhs)	Expected No of Self employment	Expected mandays generation	Weightage	Mandays converted in to no.of persons	Total Employment	Cost (Rs. In lakhs)	Expected No of Self employment	Expected mandays generation	Weightage	Mandays converted in to no.of persons	Total Employment	Cost (Rs. In lakhs)	Expected No of Self employment	Expected mandays generation	Weightage	Mandays converted in to No of persons	Total Employment
V.14	Clearing Bushes(ha)	7.5	0	6000	1%	131	6000	0	0	0	0%	0	0	34.2	0	28160	1%	1021	28160
V.15	Soil Up Filling(ha)	1.56	0	1248	0%	27	1248	3	0	2400	0%	52	2400	8.28	0	6624	0%	0	6624
V.16	Soil Removing JB School Minicoy(ha)	0	0	0	0%	0	0	0	0	0	0%	0	0	0.5	0	400	0%	0	400
V.17	Ground Leveling SSSchool Minicoy(ha)	0	0	0	0%	0	0	0	0	0	0%	0	0	5	0	4000	0%	0	4000
V.18	Ground Grass Filling HSS Kalpeni(ha)	0	0	0	0%	0	0	0	0	0	0%	0	0	20	0	9600	0%	0	9600
V.19	Tree Plantation - School(ha)	0	0	0	0%	0	0	0	0	0	0%	0	0	10.073	0	4836	0%	0	4836
V.20	Vegetable Garden-School(ha)	0	0	0	0%	0	0	2.04	0	1632	0%	35	1632	6.12	0	4896	0%	0	4896
V.21	Roof Vegetable Garden-School(ha)	9.6	0	4608	0%	101	4608	19.2	0	9216	1%	200	9216	57.6	0	27648	1%	1021	27648
VI. Other Works																			
VI.1	Septic Tank	18.27	0	9202	1%	202	9202	25.02	0	12009	1%	261	12009	99.18	0	48469	1%	1021	48469
VI.2	Public Toilet & Urinal	2	0	960	0%	21	960	0	0	0	0%	0	0	8	0	3840	0%	0	3840
VI.3	Coconut Climbing	195	0	156000	16%	3417	156000	195	0	156000	16%	3386	156000	585	0	468000	10%	10211	468000
VI.4	Mosquito Control(days)	0.063	0	50	0%	1	50	0.0625	0	50	0%	1	50	0.75	0	600	0%	0	600

Table No. III.8.c contd.....

Sl.No	Missing Infrastructure/ works proposed	Year																	
		2013-2014						2014-2015						Total					
		Cost (Rs. In lakhs)	Expected No of Self employment	Expected mandays generation	Weightage	Mandays converted in to no.of persons	Total Employment	Cost (Rs. In lakhs)	Expected No of Self employment	Expected mandays generation	Weightage	Mandays converted in to no.of persons	Total Employment	Cost (Rs. In lakhs)	Expected No of Self employment	Expected mandays generation	Weightage	Mandays converted in to No of persons	Total Employment
VI.5	Param Maintenance	0.375	0	300	0%	7	300	0.35	0	280	0%	6	280	1.725	0	1380	0%	0	1380
VI.6	Compound Wall GH to PWD(KM)	0	0	0	0%	0	0	0	0	0	0%	0	0	22.5	0	10800	0%	0	10800
VI.7	Cycle Shed -School	0	0	0	0%	0	0	0	0	0	0%	0	0	3	0	1440	0%	0	1440
VI.8	Kitchen Shed & Kitchen Block Repair- School	0	0	0	0%	0	0	0	0	0	0%	0	0	3.5	0	1680	0%	0	1680
VI.9	Auditorium SS School Minicoy	0	0	0	0%	0	0	0	0	0	0%	0	0	20	0	9600	0%	0	9600
VI.10	New Hall GSS Kavaratti	0	0	0	0%	0	0	0	0	0	0%	0	0	20	0	9600	0%	0	9600
VI.11	New Building JB East Kavaratti	0	0	0	0%	0	0	0	0	0	0%	0	0	30	0	14400	0%	0	14400
VI.12	Building Repair SS School Kavaratti	0	0	0	0%	0	0	0	0	0	0%	0	0	15	0	7200	0%	0	7200
VI.13	Compound Wall - School Kavaratti &Minicoy(KM)	0	0	0	0%	0	0	0	0	0	0%	0	0	9.3	0	4464	0%	0	4464
VI.14	Lab SS School Minicoy	0	0	0	0%	0	0	0	0	0	0%	0	0	12	0	5760	0%	0	5760
	Total	1795.88		962108	100%	21075	962108	1875.23		998333	100%	21671	998333	8919.72		4629395	100%	102106	4629395

Source : Consolidation of block wise final works

III.9. Sectors & Profile of Activities identified for MGNREGS

Six sectors have been identified under MGNREGS for Lakshadweep. These sectors are; Water Conservation, Renovation of Traditional Water Bodies, Rural Connectivity, Flood Control, Land Development and Other works. The table no. III.9 suggests this in detail

Table No. III.9: Sector and Profile of Activities – Lakshadweep District

Sector	Works Proposed	Number of Works	No. Mandays	Percentage	Cost (In Lakhs)	Percentage
I. Water Conservation	1. Digging of Pond	86	61920	1.34%	129	1.45%
	2. Percolation of Well	371	56091	1.21%	116.87	1.31%
	3. Rain Water Harvesting Tank	1832	267468	5.78%	549.6	6.16%
	4. Well Recharge Pit	556	6672	0.14%	8.35	0.09%
	5. Chakirikkulam	150	3000	0.06%	3.75	0.04%
	6. Husk Burial	11845	568560	12.28%	1184.5	13.28%
	Sub Total (Sector)			963711	20.82%	1992.07
II. Renovation of Traditional Water Bodies	1. Well Renovation	2280	164160	3.55%	342.05	3.83%
	2. Pond Renovation	437	104880	2.27%	218.5	2.45%
	Sub Total (Sector)		269040	5.81%	560.55	6.28%
III. Rural Connectivity	1. Link Road (km)	63.79	1224771	26.46%	2551.6	28.60%
	2. Ring Road (km)	32.15	617280	13.33%	1286	14.41%
	3. Road Maintenance (km)	0.6	11520	0.25%	24	0.27%
	Sub Total (Sector)		1853571	40.04%	3861.6	43.29%
IV. Flood Control	1. Anti Sea Erosion Work (km)	28.7	220416	4.76%	459.2	5.15%
	2. Maintenance of Anti sea erosion work (km)	5.5	21120	0.46%	44	0.49%
	3. Sea Shore Plantation (ha)	126.6	151351	3.27%	315.74	3.54%
	4. Sea Mouth Cleaning (meter)	250	20000	0.43%	25	0.28%
	Sub Total (Sector)		412887	8.92%	843.94	9.46%

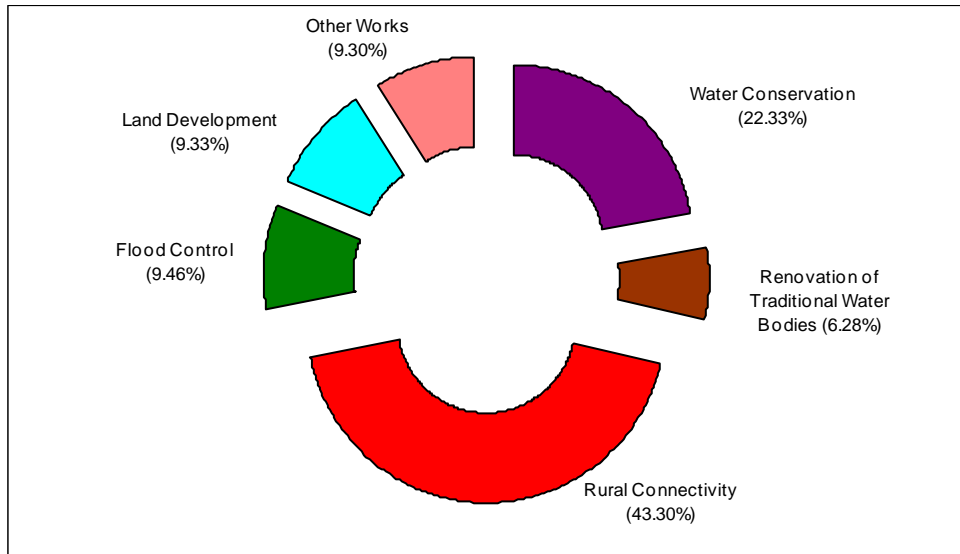
Sector	Works Proposed	Number of Works	No. Mandays	Percentage	Cost (In Lakhs)	Percentage
V. Land Development	1. Coconut Seedling	26990	64776	1.40%	134.95	1.51
	2. Coconut Pathy	265	23051	0.50%	45.05	0.51
	3. Centri Pital Terracing	70000	28000	0.60%	35	0.39%
	4. Coconut Compost Pit	721	8652	0.19%	10.82	0.12%
	5. Coconut Trench	800	9600	0.21%	12.005	0.13%
	6. Compost Pit	775	9300	0.20%	11.63	0.13%
	7. Waste Pit	3133	38136	0.82%	47.67	0.53%
	8. Coir Pit Compost	320	3840	0.08%	4.8	0.05%
	9. Fish Waste Compost	197	2364	0.05%	2.955	0.03%
	10. Horticulture (ha)	192.55	157191	3.40%	198.45	2.22%
	11. Bio Fencing (mtr)	37000	40320	0.87%	84	0.94%
	12. Land Development and Island Cleaning (ha)	1442	55565	1.20%	69.22	0.78%
	13. Road side Plantation (ha)	13.48	15994	0.35%	33.32	0.37%
	14. Clearing Bushed (ha)	68.3	28160	0.61%	34.2	0.38%
	15. Soil Up Filling (ha)	1.59	6624	0.14%	8.28	0.09%
	16. Land Levelling Work in Schools (ha)	0.46	14000	0.30%	25.5	0.29%
	17. Tree Plantation (ha)	0.207	4836	0.10%	10.073	0.11%
	18. Vegetable Garden (ha)	0.531	32544	0.70%	63.72	0.71%
		Sub Total (Sector)		542953	11.73%	831.61
VI. Other Works	1. Septic Tank	1102	48469	1.05%	99.18	1.11%
	2. Public Toilet and Urinal	4	3840	0.08%	8	0.09%
	3. Coconut Climbing	0	468000	10.11%	585	6.56%
	4. Mosquito Control (days)	600	600	0.01%	0.75	0.01%
	5. Param Maintenance	69	1380	0.03%	1.725	0.02%
	6. Compound Wall (School and public place) (km)	2.12	15264	0.33%	31.8	0.36%
	7. Cycle Shed - School	3	1440	0.03%	3	0.03%
	8. Kitchen Repair and New Kitchen	3	1680	0.04%	3.5	0.04%
	9. Auditorium , New Hall and Buildings & Repair	4	40800	0.88%	85	0.95%
	10. Lab	1	5760	0.12%	12	0.13%
		Sub Total (Sector)		587233	12.68%	829.95
G Total			4629395	100%	8919.72	100%

Source : Consolidation of block wise final works

III.10. Sector wise distribution of Cost & Mandays Generated

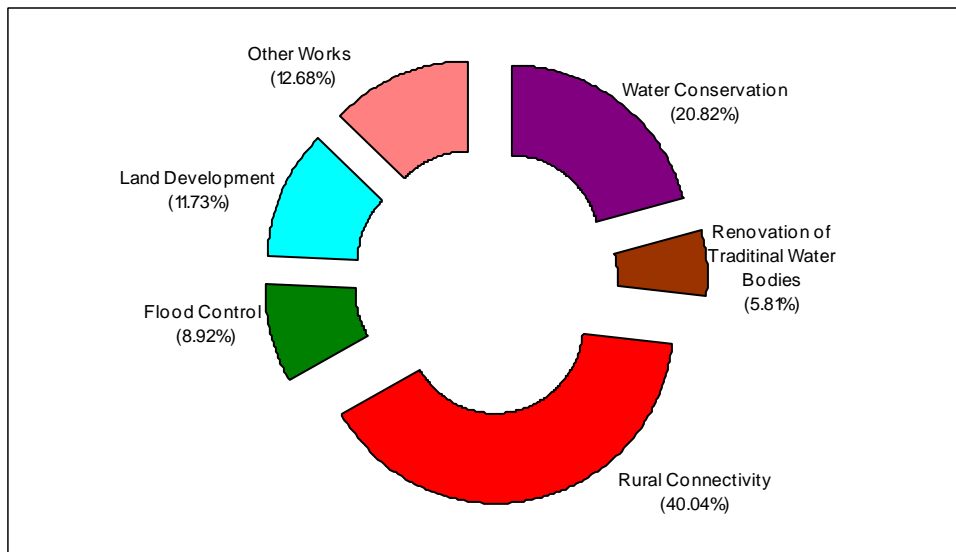
The Diagram no. III.ii provide a comparison of the sector wise distribution of cost and Mandays in Lakshadweep. Rural connectivity is the sector with highest Mandays generation as well as highest cost. Water conservation is the next sector.

Diagram No.III.ii: Sector wise Distribution of Cost



Source : Table No.III.9

Diagram No.III. iii: Sector wise Distribution of Mandays



Source : Table No. III.9

Table No. III.10: Sector wise distribution of cost and Mandays – Lakshadweep District														
Employable Sectors	Cost and Mandays Generation (Cost in lakhs & Mandays in number)													
	2010-2011		2011-2012		2012-2013		2013-2014		2014-2015		Total		Percentage	
	Cost	Mandays Created	Cost	Mandays Created	Cost	Mandays Created	Cost	Mandays Created	Cost	Mandays Created	Cost	Mandays Created	Cost	Mandays Created
Water Conservation.	330.82	163015	378.7	182936	376.05	181184	429.7	207023	476.80	229553	1992.07	963711	22.33%	20.82%
Renovation of Traditional Water Bodies.	95.5	458116	105.95	50856	115.15	55272	111.65	53592	132.3	63504	560.55	269040	6.28%	5.81%
Rural Connectivity.	942.4	452355	900	432000	661.2	317376	700	336000	658	315840	3861.6	1853571	43.30%	40.00%
Flood Control.	144.55	69372	172.54	82651	166.05	83064	168.03	83990	192.77	93810	843.94	412887	9.46	8.92
Land Development.	166.71	104507	161.95	103434	137.23	92734	170.79	114991	194.93	127287	831.61	542953	9.33%	11.73
Other works	58.73	28955	94.36	45055	240.72	178372	215.71	166512	220.43	168339	829.95	587233	9.30%	12.68%
Total	1738.71	864020	1813.5	896932	1696.4	908002	1795.88	962108	1875.23	998333	8919.72	4629395	-	-
Percentage	19.49%	18.67%	20.33%	19.38%	19.02%	19.61%	20.13%	20.78%	21.03%	21.56%	-	-	100%	100%

Source : Computed from table No. III.8.b & III.8.c

III.11. Block wise distribution of Cost & Mandays Generated

The block wise distribution of cost and mandays generated is given in the table no. III.11 and diagram nos III, v. which suggests that Kavaratti ranks highest position in terms of both budget allocation and mandays generation. Around 29% of the cost and Mandays are generated in Kavaratti block.



Pond construction under MGNREGS at Agatti Island



A new pond under MGNREGA at Andrott Island

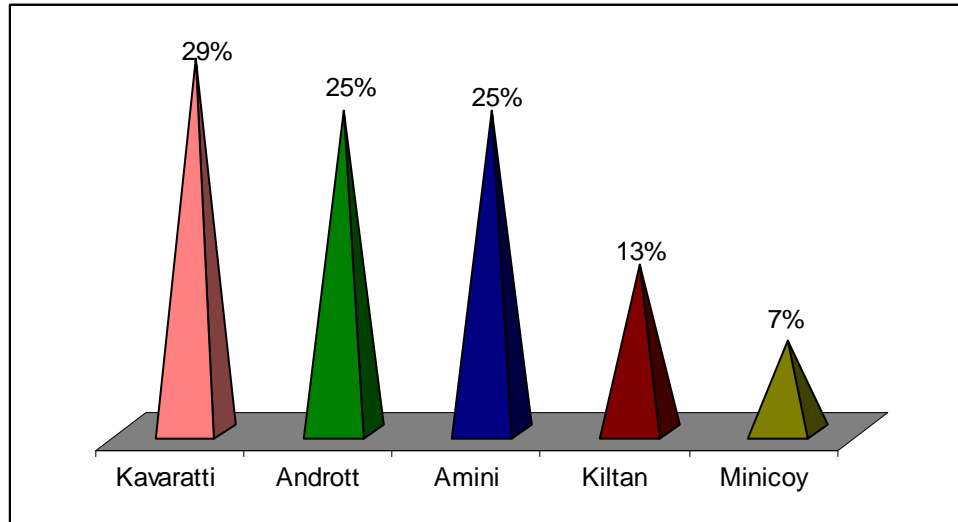
Table No. III.11: Block wise Distribution of Cost and Mandays - Lakshadweep District (Cost in lakhs & Mandays in number)																
Block	Water Conservation.		Renovation of Traditional Water Bodies.		Rural Connectivity.		Flood Control.		Land Development.		Other works		Total		Percentage	
	Cost	Mandays	Cost	Mandays	Cost	Mandays	Cost	Mandays	Cost	Mandays	Cost	Mandays	Cost	Mandays	Cost	Mandays
Kavaratti	669.89	321545	149.05	71544	1015.6	487491	189.99	91156	318.43	197892	268.31	176906	2611.27	1346534	29%	29%
Andrott	624.93	299962	151	72480	872	418560	244.74	117408	186.44	119604	189.69	139173	2268.80	1167187	25%	25%
Amini	367.92	182815	146.9	70512	1220	585600	157.98	75804	160.25	104812	142.65	105335	2195.70	1124878	25%	24%
Kiltan	166.32	81151	80.10	38424	610	292800	177.58	93167	79.82	55597	80.47	64380	1194.29	625519	13%	14%
Minicoy	163.01	78238	33.5	16080	144	69120	73.65	35352	86.67	65048	148.83	101439	649.66	365277	7%	8%
Total	1992.07	963711	560.55	269040	3861.6	1853571	843.94	412887	831.61	542959	829.95	587233	8919.72	4629395	100%	100%

Source : Consolidation of block wise final works



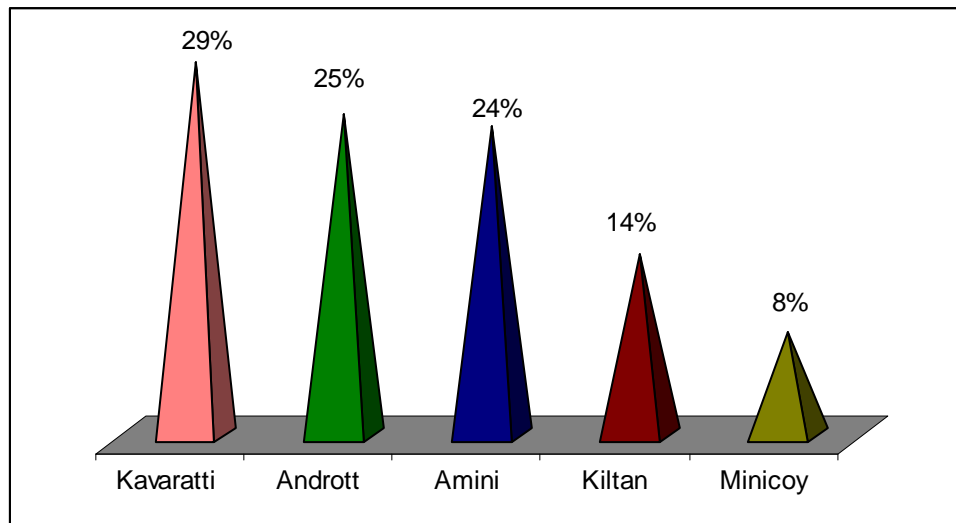
A well under MGNREGA at Andrott Island

Diagram No.III.iv: Block wise Distribution of Cost



Source : Table No.III.11

Diagram No.III. v: Block wise distribution of Mandays

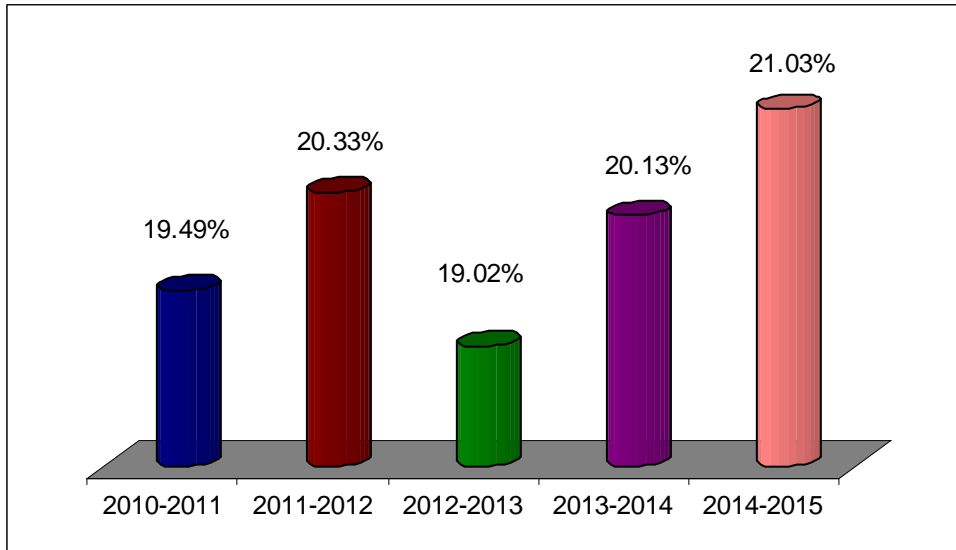


Source : Table No. III.11

III.12. Year wise distribution of Cost & Mandays Generated

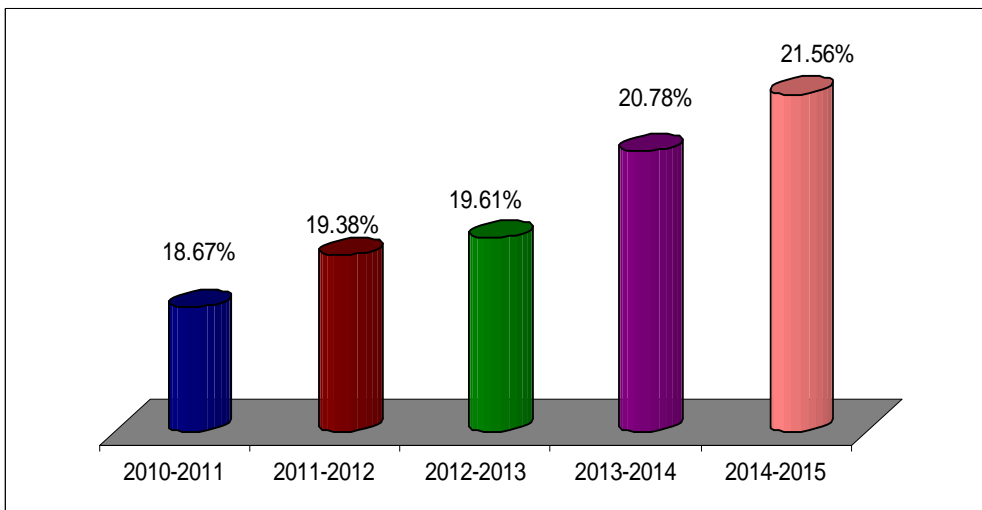
The Diagram no. III.vi, vii suggest the cost & mandays break up over the years. The mandays suggest an increasing trend over years while the cost suggests more or less a flexible trend. In 2012-2013 and 2013-2014 the cost suggest almost equal amount while the mandays suggest variations which could be due to the prioritization and nature of works.

Diagram No.III. vi: Year Wise Distribution of Cost



Source : Table No.III.10

Diagram No.III.vii: Year Wise Distribution Mandays



Source : Table No. III.10

III.13. Factors Influencing Work Implementation

The following factors affect the implementation of the works in Lakshadweep. While preparing the implementation calendar these factors have been taken in to consideration;

III.13.1. Seasonality of the island and the labour availability: Work planning has been done keeping in mind the seasonality of the region. Monsoon season are the months with peak availability of labour. Based on the availability we have classifies the labour availability seasons in to low, medium and peak. During monsoon since people do not get involved in fishing activities the fishermen are also available for alternative works. Since there is a trend of male laborers undertaking hard labour. The hard labour works are planed in those months with highest availability of male labour force.

III.13.2. Religious Festivals and Practices (Ramzaan & Fasting): During the festival days, especially during Ramzaan days, people do not prefer to get involved in to hard labour. This is because people fast during Ramzaan and so is not appropriate to get in to hard labour. Therefore those works that need hard labour is not planned during Ramzaan.

III.13.3. Gender Issues and women participation in work: While developing the calendar we have also considered the work culture practices of women and those works that are heavy are planned during the peak month when larger male work force is available in the island.

III.13.4. Material Transportation –Cost effectiveness: We have also considered the problems and risks associated with the transportation of the materials while formulating the work plan. The transportation of the materials needs to be done before the monsoon and has to be stored appropriately.

III.13.5. Seasonality of Agricultural Crops: We have considered the seasonality of some of the agricultural crops like vegetables, while distributing the works. Since the works like Bio Fencing and vegetable garden are also closely linked to these agricultural works this activities are also distributed considering the agricultural crop seasonality.

III.13.6. Land Acquisition: Since the road construction requires acquiring of private and public land it might affect the implementation. However if land acquisition is planned well ahead this delay could be planned.

Based on the above six considerations work implementation calendar has been prepared for Lakshadweep. Since the work is undertaken at the island level detailed implementation schedule is provided along with each of island specific reports (Refer Chapter V).

III.14. Over all Outcomes of the MGNREGS work Lakshadweep District

The following are the major outcomes of the MGNREGA activities for Lakshadweep.

III.14.1. Poverty Reduction: The over all poverty reduction through employment generation is an important outcome of the MGNREGA activities in the islands. This also develops an effective platform to generate savings habits among the informal sector workers in the island. Creation of sustainable job opportunities through guaranteed job for a total of 100 days a year for a family in fact is also a step towards provision of sustainable employment and income to the low income families who mostly belong to the unskilled labour category.

III.14.2. Effect on Agriculture: Since agriculture and associated activities are the priority areas under the MGNREGA the scheme is a boost of the agriculture sector across the islands. There is an opportunity to even develop agriculture labor work more or less similar to the level of a formal sector employment because of the MGNREGA.

III.14.3. Traditional agrarian practices are preserved: Preservation of the traditional agrarian practices and green farming is one among the very important outcomes of MGNREGS works in the islands. A majority of the activities proposed in the plan mainly strengthen the traditional economic supportive systems based on agrarian practices & develop new mechanisms to further strengthen the agricultural practices. Apart from this the conservation of land water and bio mass through the various activities is a unique outcome of the MGNREGS. The promotion of various green production initiatives also shall strengthen the ecological base of the local economy.

III.14.4 Women Empowerment: Since the wage rate disparity is removed under the MGNREGS the activities, the scheme paved the way for empowerment of women. Women get a regular and decent income from wage labor and this provides better dignity for women. Provision of equal pay for same work for both women and men is an important feature of MGNREGS and this facilitates better wages for women.

III.14.5. Traditional Nature of the Island: The traditional culture, practices and habits are preserved while preparing the plan. The plan instead of developing alternative or new systems attempt to strengthen the existing traditional systems. Strengthening of the traditional economic potentials of the island facilitate up keeping of the village culture while ensuring the faster development. The traditional economic activities are complements with additional asset building and other important works on the island. This strengthens the traditional economic sectors in Lakshadweep.

III.14.6. Capacity Building of the Village Deep Panchayats: Since the program implementation of the scheme is mainly done by the Panchayats, the credibility of the Panchayats as well as its capacity is enhanced. This is probably first time in the island that the Panchayats are given a larger stake in labour planning at the local level as well as managing of a very large amount of budget. The recognition of the Panchayat increases since Panchayats have more finances and are capable of providing employment to the people.

III.14.7. Disaster Mitigation and Climate Change Management: Most of the islands are vulnerable to disasters. The works proposed under the MGNREGS therefore also in the long run would strengthen the disaster mitigation and climate change management efforts of the island. The combination of activities that are suggested through the MGNREGS have an important link to the over all disaster mitigation and climate change management efforts and it would supplement the ongoing efforts in these areas.

III.15. Concluding Remarks

Mahatma Gandhi National Rural Employment Guarantee Scheme (MGNREGS) is one of the novel initiatives to provide sustainable employment opportunities for the unskilled laborers in Lakshadweep. This MGNREGS perspective plan of Lakshadweep Islands identified six major areas. The plan provides a road map of implementation. . The perspective plan suggests a total of

4629395 mandays with a budget of Rs.8919.72 lakhs for a period of five years. The scheme strengthens the women empowerment efforts through providing space for equal pay for both men and women. The perspective plan proposes 1087014.mandays for women for a period of five years. A cost of Rs.1358.77 lakhs is calculated as the budget for the work participation of women. Most important to say that it would strengthen the local economic base of the island and make the economically active sectors more productive. The perspective plan of MGNREGS in Lakshadweep would work as a major intervention for poverty reduction and it may convert the Lakshadweep in to a zone without BPL and a zone with high human development indices.



Renovation of Pond under MGNREGA at Kalpeni Island



Seashore of Kalpeni Island protected with Tetrapole
Seashore of Lakshadweep needs more protection measures under MGNREGA